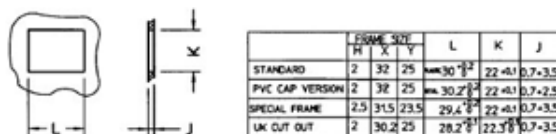
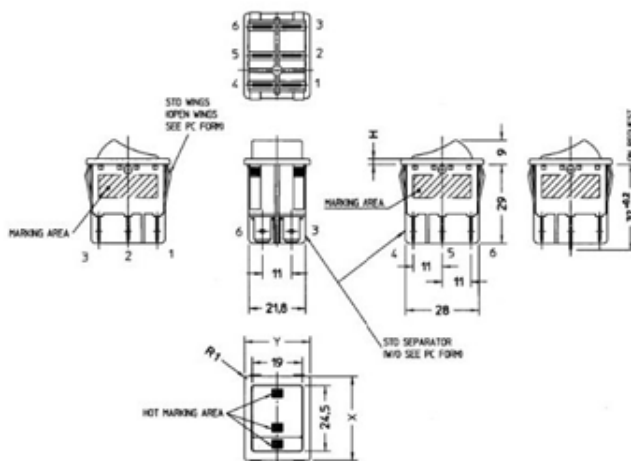

Data sheet

Article Description

Rocker switch Type 3636

16 (8) A, 250 V, 2-pole, on-/off-switch, T 125°,
fitting dimensions 22 x 30 mm,
4 x screw terminals,
illuminated

Article Picture



<i>inter BÄR-No.</i>	<i>colour housing/rocker</i>	<i>marking</i>
3636-250...	black/green	black 0-l

Technical modifications reserved!
Works at 230 V-mains must only be carried out by a specialist!