
Data sheet

Article Description

Push-button Switch Type 3030 with special push-button

2(1) A, 250 V~, on/off-switch, 1-pole, T 85°,

Decorative push-button and nut to clip on,
easy assembly

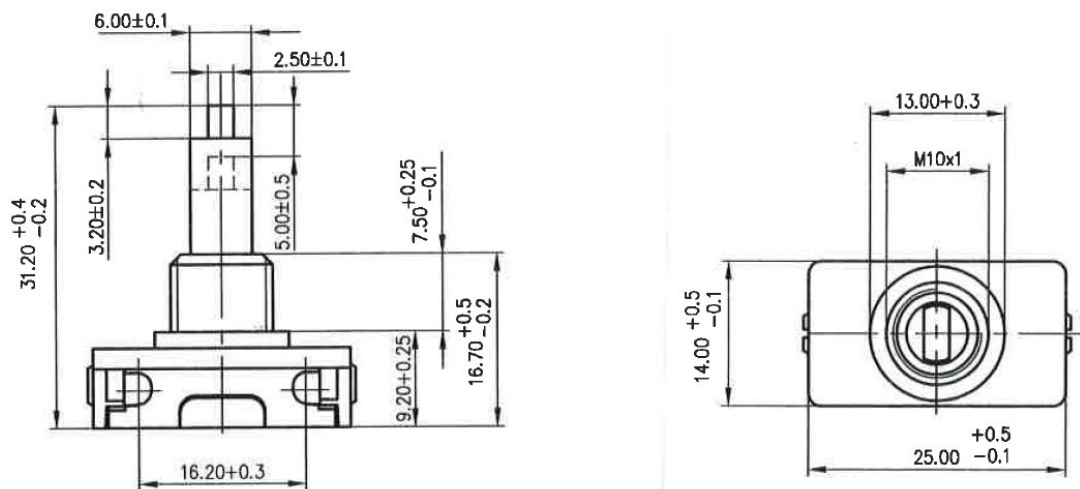
- for cable H03VV-F 2 x 0.75 mm²,
H03VV-F 3G 0.75 mm², H03VVH2-F 2 x 0.75 mm²
- central fitting M 10 x 1 mm
- screw terminals (suitability for terminals for connecting
unprepared conductors)
- degree of pollution: 2
- switching cycles: 1E4 (10.000)
- switching characteristics: complete shutdown
- comparative of creepage-
proof tracking index PTI: 175 V
- rated value of impulse
withstand voltage : 2.5 kV U (imp)

Article Picture



<i>inter BÄR-No.</i>	<i>Colour button</i>	<i>Thread lenght</i>
3030-611.	white	7.5 mm
0010-149.0120	push-button titan	
0010-148.0120	nut titan	
0010-149.0150	push-button white	
0010-148.0150	nut white	
0010-149.0167	push-button black	
0010-148.0167	nut black	

Data sheet
Push-button Switch Type 3030-611



Technical modifications reserved!
Works at 230 V-mains must only be carried out by a specialist!

inter BÄR GmbH + Co. KG, Hälverstraße 43, 58579 Schalksmühle, Tel. 02355 893-0, www.interbaer.de