

---

## Data sheet

---

### Article Description

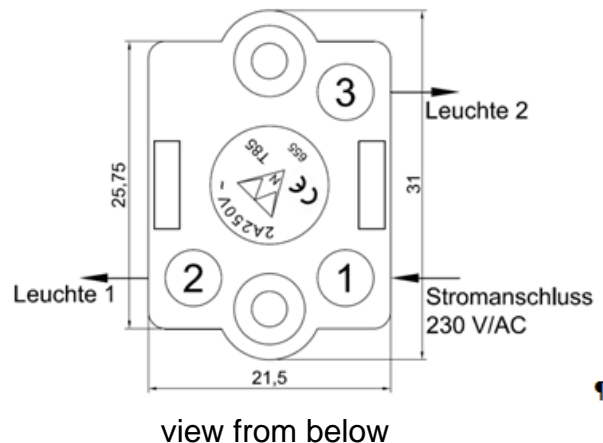
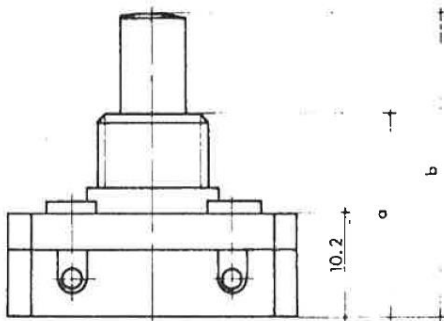
#### Push-Button **Serial** Switch Type 3076

2 A, 250 V, 1-pole, T 100° C, **serial switch**,  
 central fitting M 12 x 1 mm  
 screw terminals,  
 screwed on bell-shaped nut  
 serial connection 0/1/1+2/2/0

### Article Picture



a	21,5	25
b	32,5	37



#### Switching sequence

Actuation	Contact 2	Contact 3
0		
1	☀	
2	☀	☀
3		☀

<i>inter BÄR-No.</i>	<i>Colour</i>	<i>Thread lenght</i>
3076-001...	button white	8 mm

**Technical modifications reserved!**  
**Works at 230 V-mains must only be carried out by a specialist!**